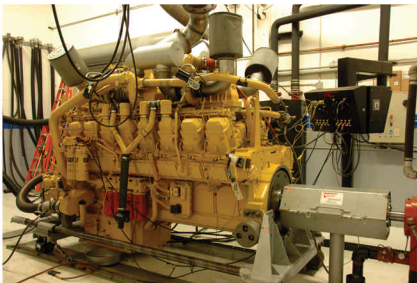


B&G MACHINE KNOWS HIGH HORSEPOWER DIESEL

The world-class leader in high horsepower diesel re-build and re-manufacturing for over 50 years

When it comes to diesel re-manufacturing, B&G Machine sets the standard for quality and reliability. Our machine shop, state-of-the-art technology and tooling, and expert staff ensures that every engine re-build meets or exceeds manufacturer standards delivering better reliability, longer up-time and lower operating costs across the board. From the smallest grader to the largest haul truck — and everything in between — B&G Machine has been the top choice for engine re-builds by customers around the globe for more than half a century.



Cat 3400 and 3500 Series
Engine Re-build Specialists



Dedicated Clean Room
Engine Assembly Facilities



Complete Custom Built Engine
and Exchange Inventory

B&G machine
inc.

6400 Corson Ave S., Seattle, WA 98108 USA
Tel: (206) 767-3130 · Toll free (800) 645-2384

On the web at:
www.BandGMachine.com